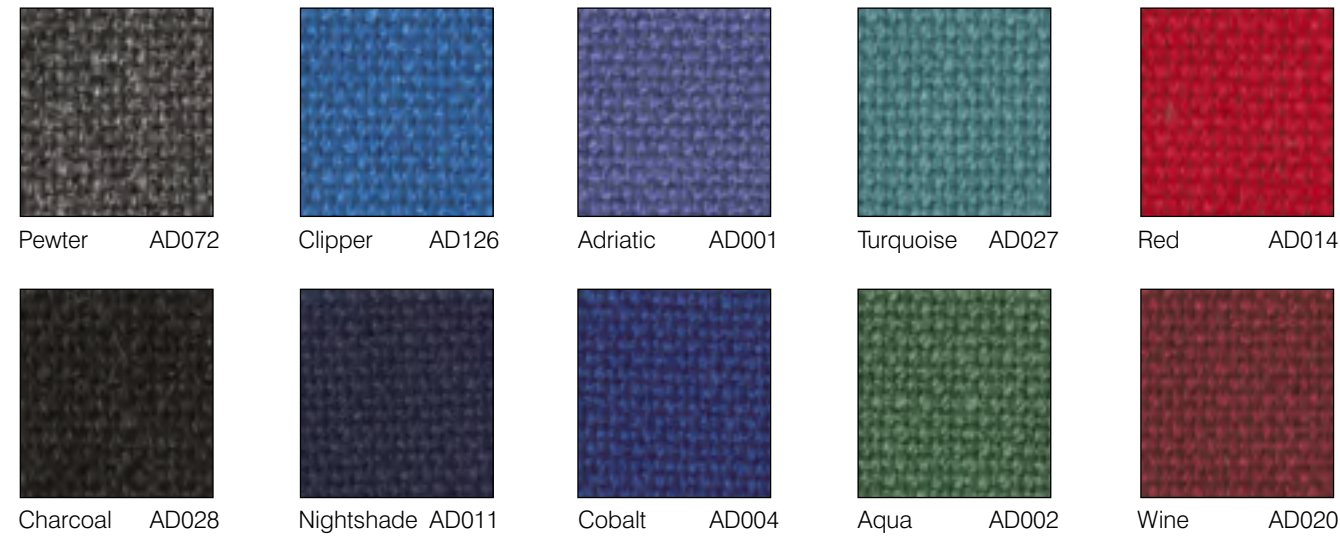


Advantage - BAND A



5
year guarantee



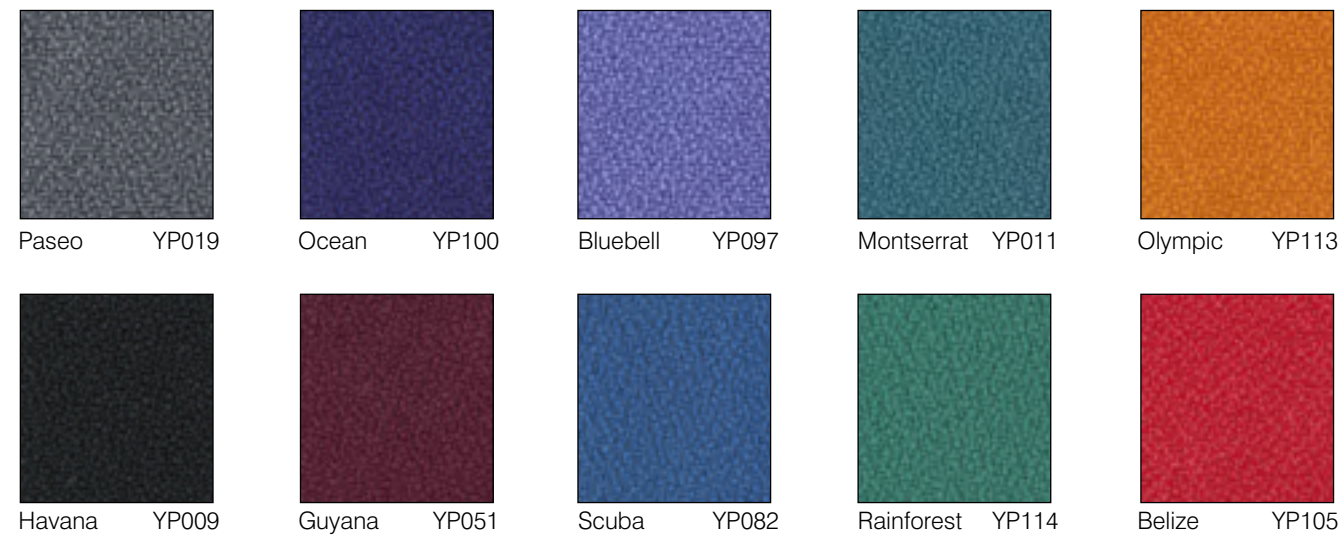
Main Line Plus - BAND B



5
year guarantee



Phoenix - BAND A



5
year guarantee



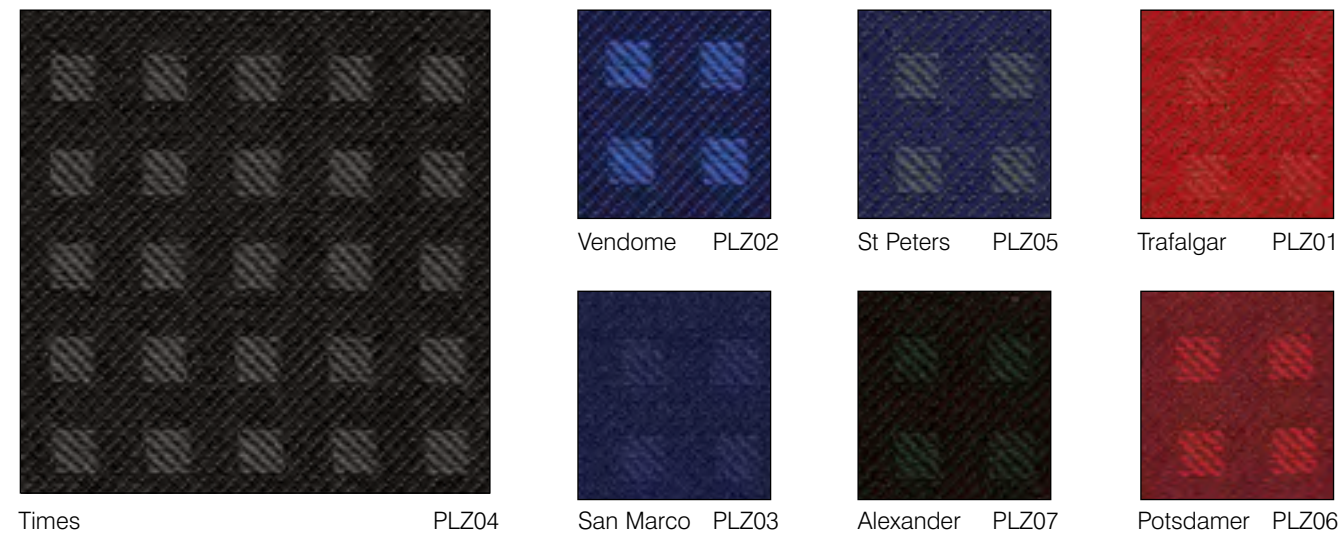
Xtreme Plus - BAND B



5
year guarantee



Plaza - BAND A



5
year guarantee



BOF[®]

Bridgend Office Furniture

A Selection Of Fabrics

Advantage

Composition
30% Wool, 70% Polypropylene

Weight
360g/m² ±5%
(468g/lin.m. ±5%)

Abrasion Resistance
90,000 Martindale cycles with a 5 year guarantee of wearability (full details available)

Flammability
BS EN 1021 - 1 :2006 (cigarette)
BS EN 1021 - 2 : 2006 (match)
BS 7176 : 1995 Low Hazard

Note: Flammability performance is dependent on foam used.

Light Fastness
5 (ISO 105 - B02:1999)

Fastness to Rubbing
Wet: 4 Dry: 4
(ISO 105 - X12:2002)

Maintenance
Vacuum regularly. Wipe clean with a damp cloth or shampoo using proprietary upholstery shampoo.

Colour Matching
Batch to batch variations in shade may occur within commercial tolerances.

Phoenix

Composition
100% Polyester
Non metallic dyestuffs

Weight
285g/m² ±5%
(400g/lin.m. ±5%)

Abrasion Resistance
100,000 Martindale cycles with a 5 year guarantee of wearability (full details available)

Flammability
BS EN 1021 - 1:2006 (cigarette)
BS EN 1021 - 2:2006 (match)
BS 7176:1995 Low Hazard

Note: Flammability performance is dependent on foam used.

Light Fastness
6 (ISO 105 - B02:1999)

Fastness to Rubbing
Wet: 4 Dry: 4
(ISO 105 - X12:2002)

Maintenance
Vacuum regularly. Wipe clean with a damp cloth or shampoo using proprietary upholstery shampoo.

Colour Matching
Batch to batch variations in shade may occur within commercial tolerances.

Plaza

Composition
100% Polyester

Weight
195g/m² ±5%
(273g/lin.m. ±5%)

Abrasion Resistance
45,000 Martindale cycles with a 5 year guarantee of wearability (full details available)

Flammability
BS EN 1021 - 1 :2006 (cigarette)
BS EN 1021 - 2 :2006 (match)
BS 7176 : 1995 Low Hazard

Note: Flammability performance is dependent on foam used.

Light Fastness
6 (ISO 105 - B02:1999)

Fastness to Rubbing
Wet: 4 Dry: 4
(ISO 105 - X12:2002)

Maintenance
Vacuum regularly. Wipe clean with a damp cloth or shampoo using proprietary upholstery shampoo.

Colour Matching
Batch to batch variations in shade may occur within commercial tolerances.

Main Line Plus Xtreme Plus

Composition
67% Wool,
33% FR Viscose blend

Weight
425g/m² ±5%
(550g/lin.m. ±5%)

Abrasion Resistance
75,000 Martindale cycles with a 5 year guarantee of wearability (full details available)

Flammability
BS EN 1021 - 1:2006 (cigarette)
BS EN 1021 - 2:2006 (match)
BS 7176 : 1995 Low Hazard
BS 5852 : 2006 Section 4
Ignition Source 5
BS 7176 : 1995 Medium Hazard

Note: Flammability performance is dependent on foam used.

Light Fastness
5 (ISO 105 - B02:1999)

Fastness to Rubbing
Wet: 4 Dry: 4
(ISO 105 - X12:2002)

Maintenance
Vacuum regularly.
Professionally dry clean or wipe clean with a damp cloth.

Colour Matching
Batch to batch variations in shade may occur within commercial tolerances.

Composition
100% Xtreme FR[®]
Non metallic dyestuffs

Weight
310g/m² ±5%
(465g/lin.m. ±5%)

Abrasion Resistance
100,000 Martindale cycles with a 5 year guarantee of wearability (full details available)

Flammability
BS EN 1021 - 1:2006 (cigarette)
BS EN 1021 - 2:2006 (match)
BS 7176 : 1995 Low Hazard
BS 5852 : 2006 Section 4
Ignition Source 5
BS 7176 : 1995 Medium Hazard

Note: Flammability performance is dependent on foam used.

Light Fastness
6 (ISO 105 - B02:1999)

Fastness to Rubbing
Wet: 4 Dry: 4
(ISO 105 - X12:2002)

Maintenance
Washable to 60°C. Vacuum regularly. Wipe clean with a damp cloth or shampoo using proprietary upholstery shampoo.

Colour Matching
Batch to batch variations in shade may occur within commercial tolerances.